

Video Capture MODULE

ADINSTRUMENTS
making science easier



Video Capture Module for LabChart Software and PowerLab

The Video Capture Module adds audio and video capability to LabChart. The module allows the synchronized recording and playback of a Windows Media Video and LabChart data file.

Record a movie directly to computer using a personal video camera, save it and link it to the LabChart data file. The recorded movie and LabChart data file can be played back together allowing users to observe what is happening in the movie simultaneously with any point in the recorded data, or vice versa.

The LabChart Welcome Centre features a Getting Started Tutorial that guides you through the Video Capture Module features using either your own data file or a supplied sample data file.

Video Capture Module applications include studies that require video observation with data acquisition.



All your analysis
in one place

LabChart

Enabling discovery



Features and benefits

- Synchronize video or audio with your LabChart data
- Suitable for use with most video cameras and frame capture cards
- Preview the video quality in LabChart before recording data

Typical studies using Video Capture

Evoked responses & Evoked potential studies • Sleep & seizure studies • Extracellular recordings
Heart rate variability/Arrhythmia • Neurophysiology • Psychology • Learning/Memory/Emotion
Physiological response • Psychophysiology and stimulus presentation • Cognition & behavior
Electrophysiology • Pharmacology • Drug discovery • Neuroprosthetics

Video Capture Module

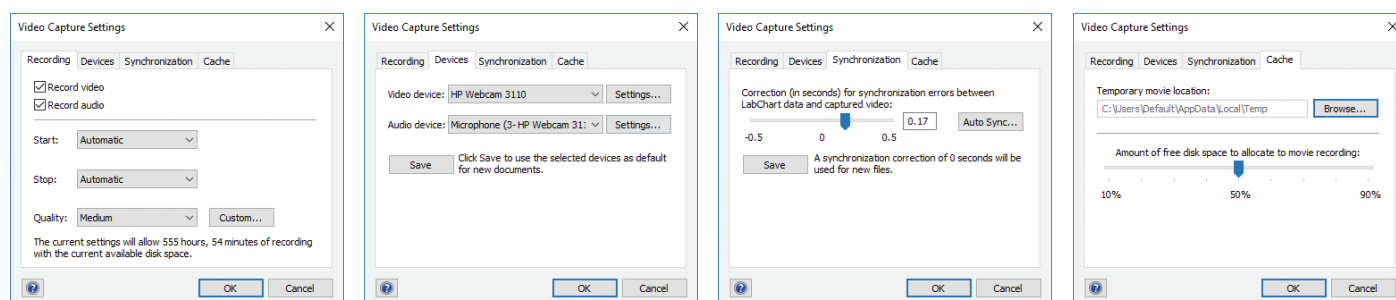
The Video Capture Module is suitable for use with a wide range of video cameras and capture cards. Captured films are automatically stored as *.wmv files; LabChart data is saved as an *.adicht file.

The Camera Preview window shows a live preview from the camera so you can adjust the quality of your recording before the experiment. The draggable Movie Marker makes navigation between LabChart data or movie frames easy. Alternatively, you can scroll within the movie and view each point of interest alongside the corresponding data.

Settings

Video Capture allows for selections including:

- Video and/or audio recordings
- Control of start/stop recording
- Quality of recording
- Video/audio instrument settings
- Synchronization settings of recording devices with LabChart to allow frame-accurate video/data recordings
- Hard disk space allocation



Recording, Devices and Synchronization tabs in the Video Capture Settings dialog.

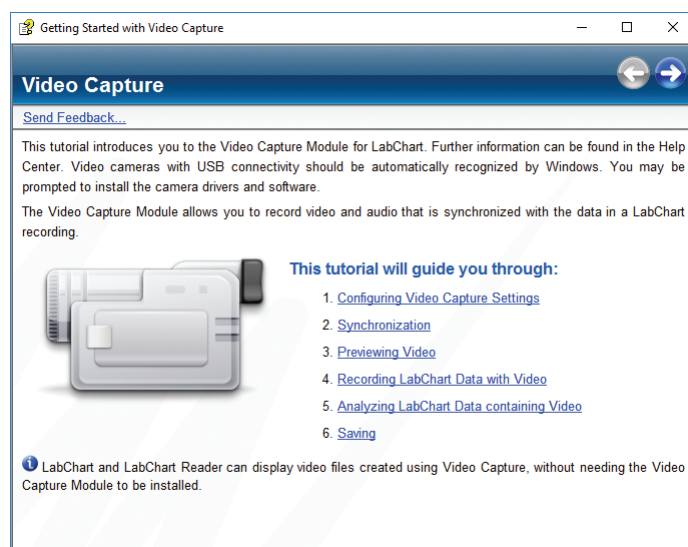
Once recorded, the movie can be played in tandem with the LabChart data file. After recording is finished, the recorded movie can be viewed by clicking on the Movie View dialog box. When the Movie View is open, the Movie Marker can be used to show the point in the LabChart data file corresponding to the current movie frame. This is useful when trying to find the exact data point corresponding to a particular event, or vice versa. You can separate your data into blocks by deleting unwanted sections.

The in-built Video Capture Tutorial will guide you through initial video recording set up in LabChart, including hardware connections, settings, synchronization, recording and analysis.

Ordering Information

Video Capture Module: MLS320/8 Video Capture (Win & Mac)

LabChart Pro* (sold separately): MLS260/8 LabChart Pro (Win & Mac)



LabChart

Additional LabChart Modules

Blood Pressure • Cardiac Output • DMT Normalization • Dose Response • ECG Analysis
HRV • Metabolic • Peak Analysis • PV Loop • Spike Histogram

Visit our website or contact your local ADInstruments representative for more information

ADInstruments Worldwide

Australia | Brazil | Europe | India | Japan | China | Middle East | New Zealand | North America | Pakistan | South America | South East Asia | United Kingdom

adstruments.com



ADINSTRUMENTS